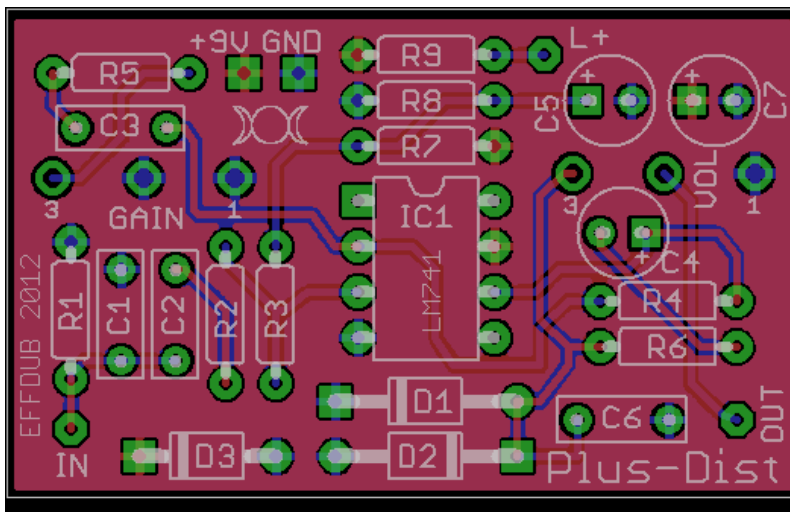


Plus-Distortion

*Circuit and Layout:
FRW / EffDub Design*

The Plus-Distortion is a more-or-less faithful rendering of the classic Distortion+ from MXR*. You could also build a workalike to the DOD 250 Overdrive* on this PCB as well, as the differences in parts/values is very minimal. That pretty much sums it up. ☺

A full-size schematic and layout image are included in the zip file with this document.



Distortion+ Parts List

R1	1M	C1	1nF	D1, D2	1N34A ¹
R2	10K	C2	10nF	D3	1N4001
R3	1M	C3	47nF	IC1	LM741 ²
R4	1M	C4	1μF	GAIN	C500K
R5	4K7	C5	47μF	VOL	A100K
R6	10K	C6	1nF		
R7	1M	C7	47μF		
R8	1M				
R9	4K7 (CLR)				

Parts Notes / Sourcing

1 – The original diodes used in Distortion+ were Germanium, so you could use 1N34A, 1N60, 1N100, or any other Germanium diode. You could also use a Schottky diode, such as BAT42 or similar, as they have a very similar forward voltage drop to Germanium. Any diodes will work, however, so feel free to experiment with silicon diodes and LEDs as well.

2 – The original op amp used was LM741. Pretty much any single op amp will work. You could even use an externally compensated op amp, such the LM308 found in the Rat circuit, but doing so would require you to manually solder a 33pf cap between pins 1 and 8 of the op amp.

Commercial Use

This PCB is provided for any and all uses. This includes commercial resale in any form (kits, finished pedals, etc). The layout artwork remains the intellectual property of EffDub Design. If you would like to have custom PCBs made with your brand and product name on the silkscreen, please contact me at effdub@gmail.com.

* Brand and product names are used for reference only and remain the property of their respective corporate overlords. No affiliation of any kind regarding this project with any commercial brand, product, or company is either expressed or implied.